

# Inclusion International

PROFILE AND ANNUAL REPORT FOR YEARS ENDED 31 DECEMBER 2010 AND 31 DECEMBER 2011



Inclusion  
international



## Officers



**Klaus Lachwitz**  
President



**Diane Richler**  
Past President



**Ralph Jones**  
Secretary General



**Tim Gadd**  
Treasurer

## Council Members

**Haydee Beckles**, Self-advocate Regional Representative from Inclusion Inter-Americana, Panama

**Mia Farah**, Self-advocate Regional Representative from Inclusion Middle East, North Africa, Lebanon

**Gessesse Tadesse**, Regional Representative from Inclusion Africa, Ethiopia

**Raquel Jelinek**, Regional Representative from Inclusion Inter-Americana, Mexico

**Maureen Piggot**, Regional Representative from Inclusion Europe, United Kingdom

**David Corner**, Self-advocate Regional Representative from Inclusion Asia Pacific, New Zealand

**Quincy Mwiya**, Self-advocate Regional Representative from Inclusion Africa and the Indian Ocean, Zambia

**Nagase Osamu**, Regional Representative from Asia Pacific, Japan

**Ciara Evans**, Self-advocate Regional Representative from Inclusion Europe, United Kingdom

**Roland Tamraz**, Regional Representative from Inclusion Middle East and North Africa, Lebanon

## Staff

**Connie Laurin-Bowie**, Executive Director

**Raquel Gonzalez**, Administrator-Coordinator

**Anna MacQuarrie**, Human Rights Officer

**Manuela Hasselknippe**, Project Officer

**Ines Escallon**, Project Officer

## Address

Inclusion International

KD.2. 03

University of East London

Docklands Campus

4-6 University Way

London E16 2RD

Tel: 44 208 223 7709

Fax: 44 208 223 6081

E-mail: [info@inclusion-international.org](mailto:info@inclusion-international.org)

Website: [www.inclusion-international.com](http://www.inclusion-international.com)

## WHO WE ARE AND WHAT WE STAND FOR

Inclusion International is a global federation of family-based organizations advocating for the human rights of people with intellectual disabilities worldwide. For over fifty years Inclusion International has been committed to the promotion of these human rights and our organization now represents over 200 member federations in 115 countries throughout five regions including the Middle East and North Africa, Europe, Africa and the Indian Ocean, the Americas, and Asia Pacific.

## OUR VISION

A world where people with intellectual disabilities and their families can equally participate and be valued in all aspects of community life.

## OUR MISSION

With its member societies, Inclusion International acts as an agent for change on the basis of four main principles affecting the lives of people with an intellectual disability and their families:

- Inclusion in all aspects of everyday society
- Full citizenship which respects individual human rights responsibilities
- Self-determination in order to have control over the decisions affecting one's life
- Family support through adequate services and support networks to families with a disabled member

# STRATEGIC PLAN 2010-2015

## VISION

A world where people with intellectual disabilities and their families can equally participate and be valued in all aspects of community life.

## MISSION STATEMENT

Inclusion International will advocate for the inclusion of people with disabilities into their communities, as valued neighbours and citizens.

## STRATEGIC PRIORITIES

Inclusion International will pursue four strategic priorities to fulfill its vision, mission and guiding principles:

### **Strategic Priority 1: Promote the UN Convention on the Rights of Persons with Disabilities (CRPD)**

Through its membership, Inclusion International will promote and support the implementation of the CRPD in key priority areas that will achieve real and lasting change in societies for people with an intellectual disability and their families.

**Goal 1:** Member Support – support members to contribute to their country's national initiatives in implementing the CRPD.

**Goal 2:** Knowledge Sharing – promote the exchange of experiences, resources and practices among Inclusion International's members, partners and networks.

**Goal 3:** Research & Monitoring – establish an international research and monitoring capacity in each of the CRPD priority areas.

**Goal 4:** Partnership Building – develop a thriving and diverse network of families, researchers, civil society organizations, governments and international institutions on intellectual disability and inclusion.

**Goal 5:** Policy Development and Engagement – work with Governments, international agencies and civil society to develop and promote inclusive policies that ensures the implementation of the CRPD.

## CONTINUING IMPROVEMENT

### **Strategic Priority 2: Knowledgeable & Representative Voice**

Build and support a strong membership network of people with an intellectual disability, their families and their organisations throughout the world and by so doing be widely recognised as the authoritative and representative voice on all issues affecting people with an intellectual disability.

### **Strategic Priority 3: Capacity**

Ensure stable and sustainable revenue that can be applied to strengthening internal capacity and thus enhancing Inclusion International's ability to respond to its strategic priorities and the expectations of members.

### **Strategic Priority 4: Membership**

Strengthen, develop and increase the membership base and regional structures to help ensure wider involvement by membership in achieving the strategic priorities and activities of Inclusion International.

## GUIDING PRINCIPLES

With its member societies, Inclusion International acts as an agent for change on the basis of four main principles affecting the lives of people with an intellectual disability and their families:

1. Inclusion in all aspects of everyday society
2. Full citizenship which respects individual human rights responsibilities
3. Self-determination in order to have control over the decisions affecting one's life
4. Family support through adequate services and support networks to families with a disabled member

## KEY PRIORITY AREAS

Inclusion International's key priority areas for the CRPD are:

1. **Preamble on the Role of Families**
2. **Article 12: Equal Recognition Before the Law** – People with intellectual disabilities have legal capacity and have the right to support in order to exercise their capacity
3. **Article 19: Living Independently and Being Included in the Community** – People with intellectual disabilities have the right to choose to live in the community with the supports required
4. **Article 24: Education** – Students with intellectual disabilities have the right to be included in the regular school with the supports they require
5. **Article 32: International Cooperation** – Governments are committed to ensure that international cooperation, aid and humanitarian assistance are inclusive

# PRESIDENT'S REPORT

Since elected President at the General Assembly of II in 2010, I have had the privilege of meeting and talking to families and self-advocates in all five regions of the world. Wherever they live and whatever the political or economic context, families share some common challenges in supporting their family member with a disability. They continue to have to fight for inclusion in school, to have supports in the community and they worry about what will happen in the future. Self-advocates are very clear that they want to be heard, they want the right to make decisions for themselves.

II adopted a strategic plan in 2010 which guides our work in the following priority areas:

#### **Preamble on Families**

#### **Article 12: Equal Recognition Before the Law**

#### **Article 19: Living Independently and Being Included in the Community**

#### **Article 24: Education**

#### **Article 32: International Cooperation**

In order to advance these priorities we have developed a workplan to support our members through regional forums; pilot initiatives and opportunities for knowledge sharing. In my role as President I have participated in these events and learned from self-advocates and families about their efforts to promote our goals of inclusion. By bringing families and self-advocates together at regional forums we provided an opportunity for our member organizations to learn about the Convention and to share information and experience.

- Bogota, Colombia, October 2010
- Johannesburg, South Africa, February 2011
- Peniche, Portugal, October 2011
- Kathmandu, Nepal, November 2011
- Amman, Jordan, March 2012
- Nairobi, Kenya, March 2012

I also have had opportunities to speak at several conferences to share the experience of our members with friends and allies in other organizations. At the IASSID Conference in Halifax, Canada I spoke to researchers from all over the world and encouraged them to work with us in developing their research priorities and in hearing from self-advocates and their families. The Down Syndrome International Conference in South Africa was an opportunity to reach out to families in other allied groups to achieve our shared goals. In Europe, I participated in the European Disability Forum (Copenhagen) and Inclusion Europe Meetings (Cyprus and Brussels). We participated in the Having a Say Conference hosted by VALID in Australia which brought self-advocates together from Victoria. In Beijing I was able to meet with a group of families who are organizing themselves to advocate for inclusion in China and II will support them in developing a strategy.

II's role is to ensure that the voices of our members are heard at the United Nations and in international forums. There are many ways that II works with the UN and with international development agencies including: the Committee of Experts (Geneva), the Conference of States Parties (New York), UNICEF, the World Health Organization and many other organizations, committees and processes.

II also works with other international disability organizations to promote and monitor the CRPD. As a founding member of the International Disability Alliance (IDA), an umbrella organisation with representation from each of the main international DPOs, II ensures that the rights of people with intellectual disabilities and their families are not forgotten. In my capacity as II's President I am a member of IDA's governing body which comes together regularly twice per year on the occasion of the Conference of States Parties.

As a lawyer and an advocate, I have a particular interest in advancing Article 12 the right to exercise legal capacity. There is no jurisdiction in the world where this right has been fully realized and I believe without the right to make decisions and exercise legal capacity, other rights will continue to be denied to people with intellectual disabilities. On behalf of II, I have spoken at many conferences and provided feedback and review of national legislation in this area.

Let me finish up with some positive messages: Our staff which in 2011 consisted of Connie Laurin-Bowie (Executive Director); Raquel Gonzalez (Coordinator), Anna MacQuarrie, Manuela Hasselknippe and Ines Escallon is experienced and very much committed to work for the benefit of people with intellectual disabilities and their families.

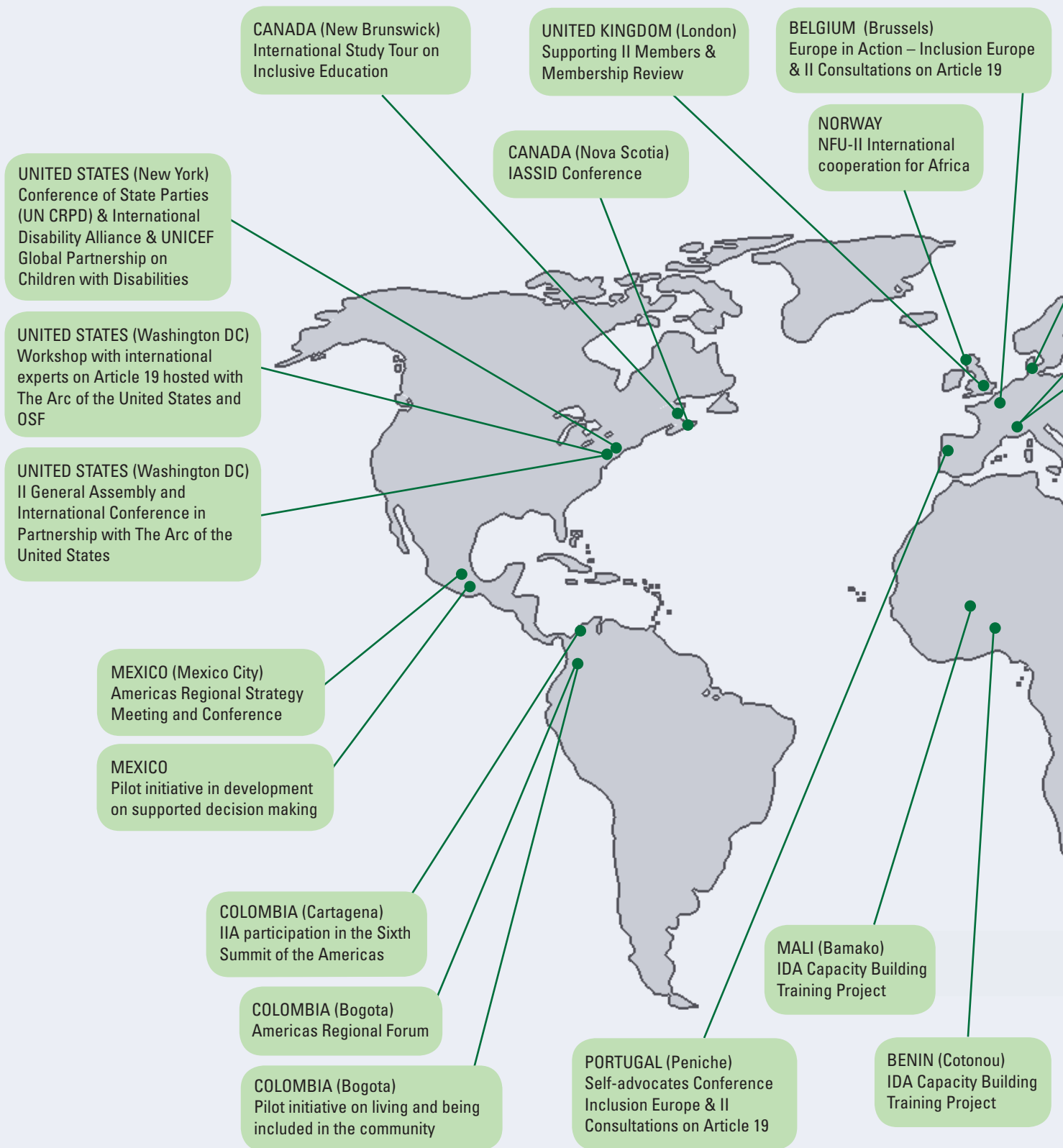
With a small staff and operational budget, the work of the Officers and Council Members of II is vital to the success of our work. Likewise the member organizations who contribute staff time and financial support to our work and the individuals who volunteer their expertise and time are much appreciated.

My special thanks go to Diane Richler, II's Past President. Since June 2010 she has been the chairperson of the International Disability Alliance. Her experience, knowledge and strategic work has helped shape the future work of II and the international disability community.

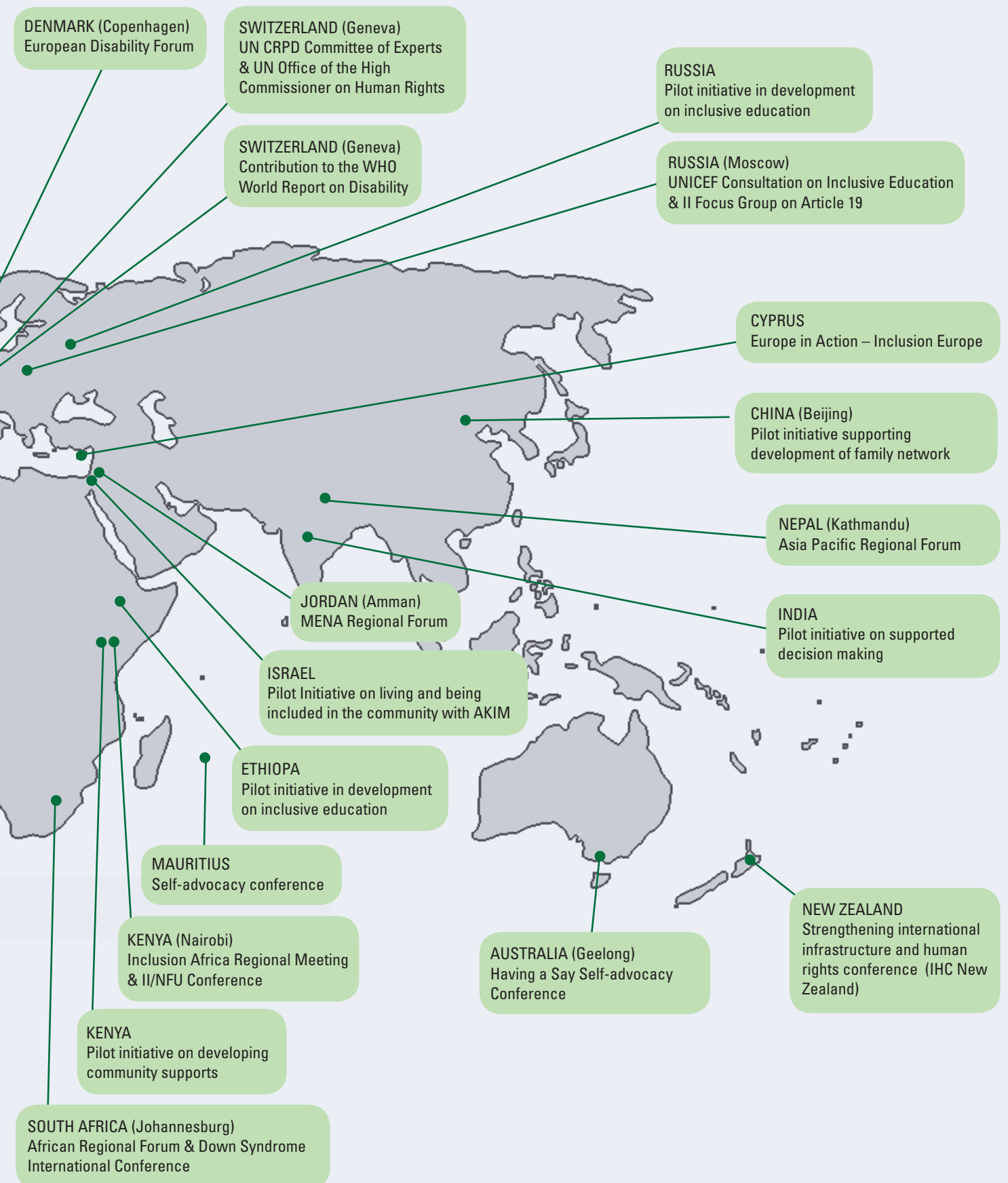
As we move forward with our workplan in the coming years we face many new challenges. I am confident that Inclusion International and our members around the world will continue to be innovative and tenacious advocates for inclusion.

**Klaus Lachwitz**  
**President**

# PROJECT UPDATE



# PROJECT UPDATE



# EXECUTIVE DIRECTOR'S REPORT

In 2010 Inclusion International celebrated its 50<sup>th</sup> anniversary at the 15<sup>th</sup> World Congress in Berlin. With over 3,000 participants from over 70 countries, the Congress marked an important moment for people with intellectual disabilities and their families. It signaled both a celebration of the history of a movement and it charted a course for the future. The General Assembly of Inclusion International adopted a strategic plan which builds on the UN Convention on the Rights of People with Disabilities and underlines the priorities of self-advocates and families around the world. The priorities outlined in the strategic plan include: the role of Families (preamble); Legal Capacity (Article 12); Living and Being Included in the Community (Article 19) and Inclusive Education (Article 24).

These priorities were identified by Inclusion International members during the negotiation of CRPD and II representatives worked to ensure that the voices of self-advocates and families were included and recognized in these articles of the Convention and throughout the Convention. Having these positions embedded in the Convention provides us with a tool to advance our objectives but having established these commitments by governments who have ratified the Convention the challenge remains in their implementation. Making inclusive education a reality; developing models of supported decision-making; building supports to families and developing good practices for inclusion in the community all require knowledge and strategies at a local and national level. The members of Inclusion International are national family based organizations that work with governments and in the community on very practical strategies to support people and influence change. Inclusion International's in advancing the shared objectives of our members is: 1) support our members

to implement and monitor the Convention and 2) ensure that the perspectives of our members are heard at the international level. Our workplan for 2010-2013 has been designed to support our members in their work and to ensure that their perspectives and voices are heard.

## 1) Support to Members: Linking Global Knowledge to Local Change

Inclusion International supports its member organizations at the national level to work with their governments to promote inclusion and to develop models of good practice in supports to families; supported decision making; employment; housing; inclusive education; etc.

### Regional Forums

This year II hosted three (of five) regional forums which were designed to provide members with an opportunity to learn about how to use the CRPD to advance their objectives at a national level; to share experience and learning about implementation and to develop shared strategies for advancing inclusion. Each of the forums provided an opportunity for member organizations in the region to understand and use the Convention to advance their own objectives in promoting inclusion at the country level, to identify common challenges across countries of the region and to develop opportunities to work together to influence regional decision making processes and structures. Collectively, the forums (which were held between 2010 and 2012) reached over 720 families, self-advocates and partners from more than 89 countries.

### Pilot Initiatives

In addition, a series of pilot initiatives have been developed to enable Inclusion International to work directly with national member organizations either to: support and strengthen the capacity of national organization; or on specific initiatives which advance one or more of II's priorities. (see the map on Page 6 for examples of these pilot initiatives.)

## 2) A Global Voice: Linking Local Knowledge to Global Change

The strength and legitimacy of Inclusion International in our efforts to influence international agendas (like the CRPD) comes from the knowledge and experience of our members. By learning from and sharing the experiences of our members II has become an international resource and network which can influence policy decisions and actions in the UN system and through other international mechanisms. Over the past year II has built knowledge





networks to support our work (Convention Action Teams); Developed a Global Campaign on Article 19 and developed a global advocacy and engagement strategy.

## **Convention Action Teams**

Inclusion International established 4 Convention Action Teams (CATs) which are composed of volunteers who have expertise in each of the priority areas of our strategic plan. Through the CATs, II is able to provide direct support and technical expertise to members and partners. A CAT website ([www.iicats.org](http://www.iicats.org)) has been developed where members can post and share information and resources, experiences or seek assistance and/or expertise about any of our CRPD priority areas.

In the past year the CATs have provided expertise and support to:

- Pilot initiatives in Israel, Kenya, Colombia, Mauritius, and China;
- Specific (technical) assistance in review of legislation and expert presentations on thematic issues;
- Expert input to II on thematic issues;
- Development and hosting of study tours;
- The development of tools and resources (i.e., discussion papers, expert papers on particular themes, Global Reports).

The work of the CATs provides both direct support to our members but also enables Inclusion International to develop and articulate knowledgeable positions that reflect the work of our members at the global level.

## **Article 19 Campaign**

As with Inclusion International's previous two campaigns on poverty and inclusive education (available on our website), the *Global Campaign on Living and Being Included in the Community* has been a campaign to seek the perspectives of people with intellectual disabilities and their families in describing what being included in the community means to them and what the current challenges are to achieving inclusion. The website <http://www.ii-livinginthecommunity.org> was developed to share information about the Campaign and as a tool to collect information for the Report. With contributions from over 90 countries, the Global Report will be released at Inclusion International's Global Forum and General Assembly in Washington, DC (October, 2012).

The report will be a tool for the articulation of the voices of self-advocates and families all over the world and for advocacy within the UN and other international systems as well as for members to use in advancing their work to close institutions; develop supports in the community and promote the rights of people with intellectual disabilities to make decisions for themselves.

## **Global Advocacy and Engagement Strategy**

There are a range of human rights mechanisms, development agencies and political bodies at the international level that have an impact on the policies of governments and therefore on the lives of people with intellectual disabilities. Inclusion International has developed detailed strategies for engagement with these agencies in order to strategically advance our priorities.

In addition to direct collaboration and engagement with UNICEF, The World Health Organization (WHO), UN Department of Economic and Social Affairs (DESA), UNESCO and others, II works in collaboration with other international disability organizations through the International Disability Alliance (IDA) to monitor and promote the implementation of the UN CRPD. With the IDA, II has contributed to various submission to the Committee of Experts (The CRPD Treaty Body), participated in training sessions for cross disability groups at the country level and contributed to the development of implementation guidelines for the CRPD.

For Inclusion International to be effective in our efforts we have to ensure that we have a strong and sustainable organization with good communication systems, a strong membership base and an effective governance structure. Since the General Assembly and World Congress in 2010, we have made significant efforts to ensure that we have a strong and stable organizational basis for the continuation of our work. By building up our reserves, developing a strong staff and volunteer team, engaging our members and building strategies for better communications we have positioned Inclusion International to better serve its members and represent the voices of people with intellectual disabilities and their families globally.

**Connie Laurin-Bowie**  
**Executive Director**

# TREASURER'S REPORT AND BRIEF FINANCIALS

## SUMMARY FINANCIALS

This report to be read in conjunction with the Audited Trustee Reports and Financial Statements for 2010 and 2011, which is available on our website.

## FINANCIAL ACTIVITIES

All figures in Euros

Financial Activities for the years ending 31/12/10 and 31/12/11 (with the figures for 31/12/09 as a comparator) are summarised as follows:

	2011 €	2010 €	2009 €
<b>Income</b>			
Membership fees	164,137	150,250	138,418
Grants	160,805	259,639	134,279
Donations	32,288	39,559	104,445
Legacies	0	0	46,242
Other Income	146	107	55,825
<b>Total Income</b>	<b>357,376</b>	<b>449,555</b>	<b>479,209</b>
<b>Total Expenses</b>	<b>307,241</b>	<b>414,561</b>	<b>450,976</b>
<b>Net Incoming/ (outgoing) resources</b>	<b>50,136</b>	<b>34,994</b>	<b>28,223</b>
Funds at 1 <sup>st</sup> January	108,778	73,784	45,551
<b>Funds at 31<sup>st</sup> December</b>	<b>158,914</b>	<b>108,778</b>	<b>73,784</b>

## BALANCE SHEET

The financial position at 31<sup>st</sup> December 2011 and 31<sup>st</sup> December 2010 (with 2009 as a comparator) is summarised as follows:

	2011 €	2010 €	2009 €
<b>Assets</b>			
Debtors	13,410	20,275	113,357
Cash at Bank	301,442	219,611	120,976
<b>Total</b>	<b>314,852</b>	<b>239,611</b>	<b>234,333</b>
<b>Liabilities and Funds</b>			
Creditors	155,938	130,833	160,549
Un-restricted Funds	108,905	52,056	27,542
Restricted Funds	50,009	56,722	46,242
<b>Total</b>	<b>314,852</b>	<b>239,611</b>	<b>234,222</b>

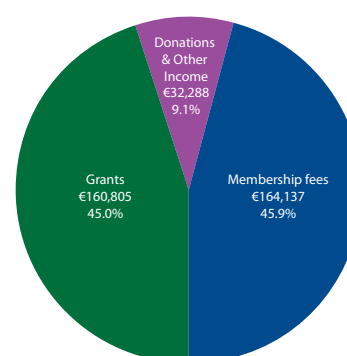
The financial position and sustainability of Inclusion International has improved significantly over the last two years with unrestricted reserves (those we are free to decide how we spend) increasing from Euro 27,542 at 31/09/12 to Euro 108,905 as of 31/12/11.

Grants and donations were received from the following benefactors in 2011 and 2010 without which we could not survive.

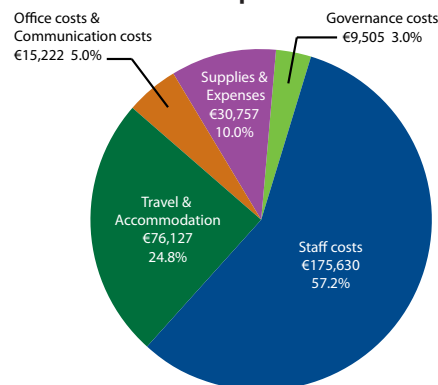
	2011 €	2010 €
<b>Grants</b>		
Anonymous	59,733	116,785
Open Society Foundation	100,802	136,814
Other	270	6,040
<b>Total</b>	<b>160,805</b>	<b>259,639</b>
<b>Donations</b>		
NFU	23,401	13,433
IAF		11,696
Other	8,887	14,430
<b>Total</b>	<b>32,288</b>	<b>39,559</b>

A breakdown in Income and Expenses for 2011 is represented in the graphs below.

Income



Expenses



Looking forward we have secured increased Grant Funding for the next three years. This will allow us to continue our work programme over the next three years.

**Tim Gadd**  
Treasurer

# WE THANK OUR SPONSORS AND DONORS

## We thank our sponsors and donors:

- Anonymous Foundation
- Open Society Foundation
- IHC New Zealand
- Norsk Forbund for Utviklingshemmede (NFU)
- Shaffala Centre
- Fundacion Saldarriaga Concha
- Inter-American Foundation

## We thank all of our partners for their collaboration and support:

- Handicap International
- International Disability Alliance (IDA)
- Mental Disability Advocacy Centre (MDAC)
- UNICEF
- UN Department of Economic and Social Affairs
- UN Special Rapporteur on Disability
- World Health Organization

## Key Achievements

As a direct result of the work of II volunteers, staff and members we have made significant progress in advancing the global objectives of people with intellectual disabilities and their families:

- Through the regional forums we have helped build understanding and awareness about the CRPD and its potential to be used as a tool locally, nationally and regionally, improved collaboration and networking within the region, and strengthened the capacity of self-advocacy leadership to promote the CRPD.
- The pilot initiatives have enabled us to support our members in the process of change and for II to benefit from the learning. For example, in Colombia we are supporting the development of alternatives to institutional care for children, in Israel we have supported our member to transform some of their approach to supporting people to live in the community, in China we are helping a parents group to organize and develop their own capacity to act as advocates for their family members with a disability.
- The Article 19 Campaign collected contributions from over 95 countries to the *Global Report on Living and Being Included in the Community*. The report will be a tool for advocacy nationally and internationally.
- Our membership review has provided an opportunity to hear directly from over 50 national members and will contribute to a review of the way that we operate and the way that we provide support to our members in the future.
- As a result of our various engagement efforts with the United Nations system, we have:
  - Ensured that the 2014 **20<sup>th</sup> anniversary of the International Year of the Family** will include the perspective of families supporting a family member with disabilities.
  - **UNICEF's State of the World's Children report** will include the perspective of children with intellectual disabilities and their families.
  - Supported self-advocates and family members to participate in the Conference of States Parties and the CRPD Committee meetings, raising awareness of governments and the UN system of their issues.
  - Supported national organizations to contribute to CRPD parallel reports (VALID in Australia, PARIVAAR in India).
  - Supported member organizations to review country reports submitted to CRPD Committee and other international/regional agencies (African Day of the Child, CACL-II submission to the CRC committee).
  - Established a relationship and knowledge exchange with OHCHR disability team.
  - CRPD Committee members presented at II regional forums and regional strategy meetings.
  - Contributed to Human Rights Watch International's report on political participation.
  - IDA reports to UN agencies and committees (CRC; OHCHR; WHO; CRPD) are inclusive of the voice and perspective of people with intellectual disabilities and families.
  - Participated in capacity building training with IDA to ensure the voice and perspective of people with intellectual disabilities and families is represented.

# Inclusion International

PROFILE AND ANNUAL REPORT FOR YEARS ENDED 31 DECEMBER 2010 AND 31 DECEMBER 2011

